



INDOFINE Chemical Company, Inc.

121 Stryker Lane, Bldg. 30, Suite 1 • Hillsborough, NJ 08844 • U.S.A.

Phone: (908) 359-6778 • FAX: (908) 359-1179

website: www.indofinechemical.com

e-mail: chemical@indofinechemical.com

CERTIFICATE OF ANALYSIS

Cat. No: 19-587

Product: **5-CHLOROSALICYLALDEHYDE**
(5-Chloro-2-hydroxybenzaldehyde)

CAS No.: [635-93-8]

Lot No.: 0902016

Molecular Formula: C₇H₅ClO₂

Molecular Weight: 156.57

Melting Point: 101-103°C

Appearance: Off white crystalline powder

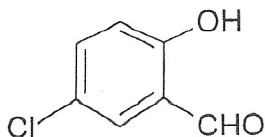
TLC: Hexane:Ethyl acetate (8:2)

Solubility: Soluble in Chloroform

NMR Spectrum: Enclosed

Storage: Cool dry place

Purity(HPLC): 99.45%





INDOFINE Chemical Company, Inc.

121 Stryker Lane, Bldg. 30, Suite 1 • Hillsborough, NJ 08844 • U.S.A.

Phone: (908) 359-6778 • FAX: (908) 359-1179

website: www.indofinechemical.com

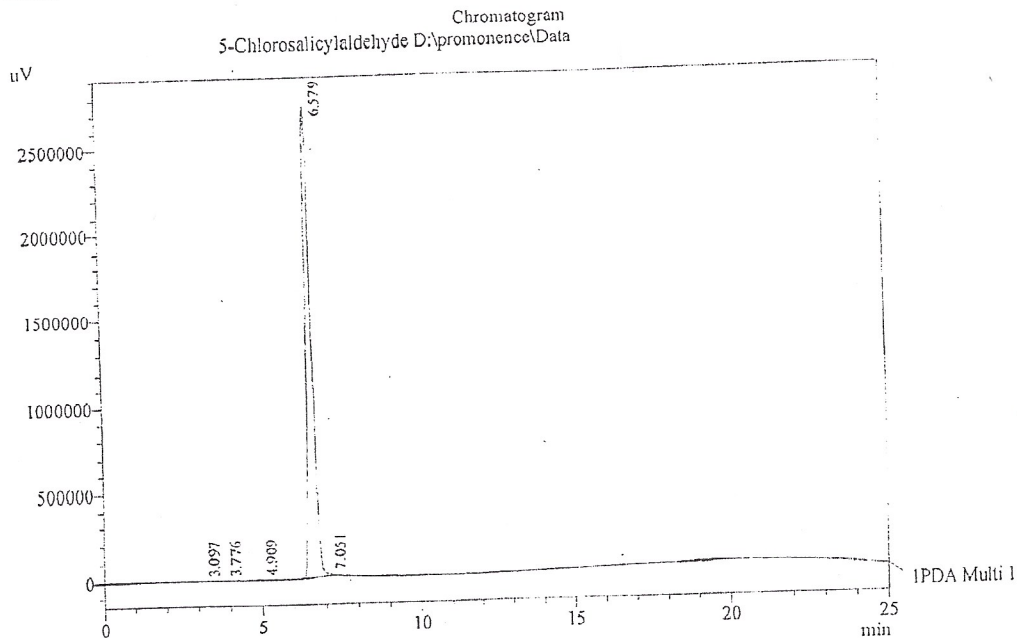
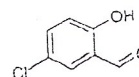
e-mail: chemical@indofinechemical.com

HPLC ANALYSIS

Acquired by : Sanjeev
Sample Name : 5-Chlorosalicylaldehyde
Sample ID : Lot No:-0902016
Injection Volume : 20 uL
Data Filename : 261212B.lcd
Method Filename : Linear Isocratic.M.lcm

Catalog no.: 19-587
Product name: 5-Chlorosalicylaldehyde
Lot No.: 0902016

Column : LUNA C-18(2), (250mm x4.6mm 5.0µ)
Flow : 1.000 mL/min.
Mobile Phase : A(40% of water) B(60% of Acetonitrile)
Diluent : Acetonitrile



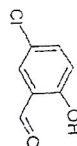
1 PDA Multi 1 / 230nm 4nm

PeakTable

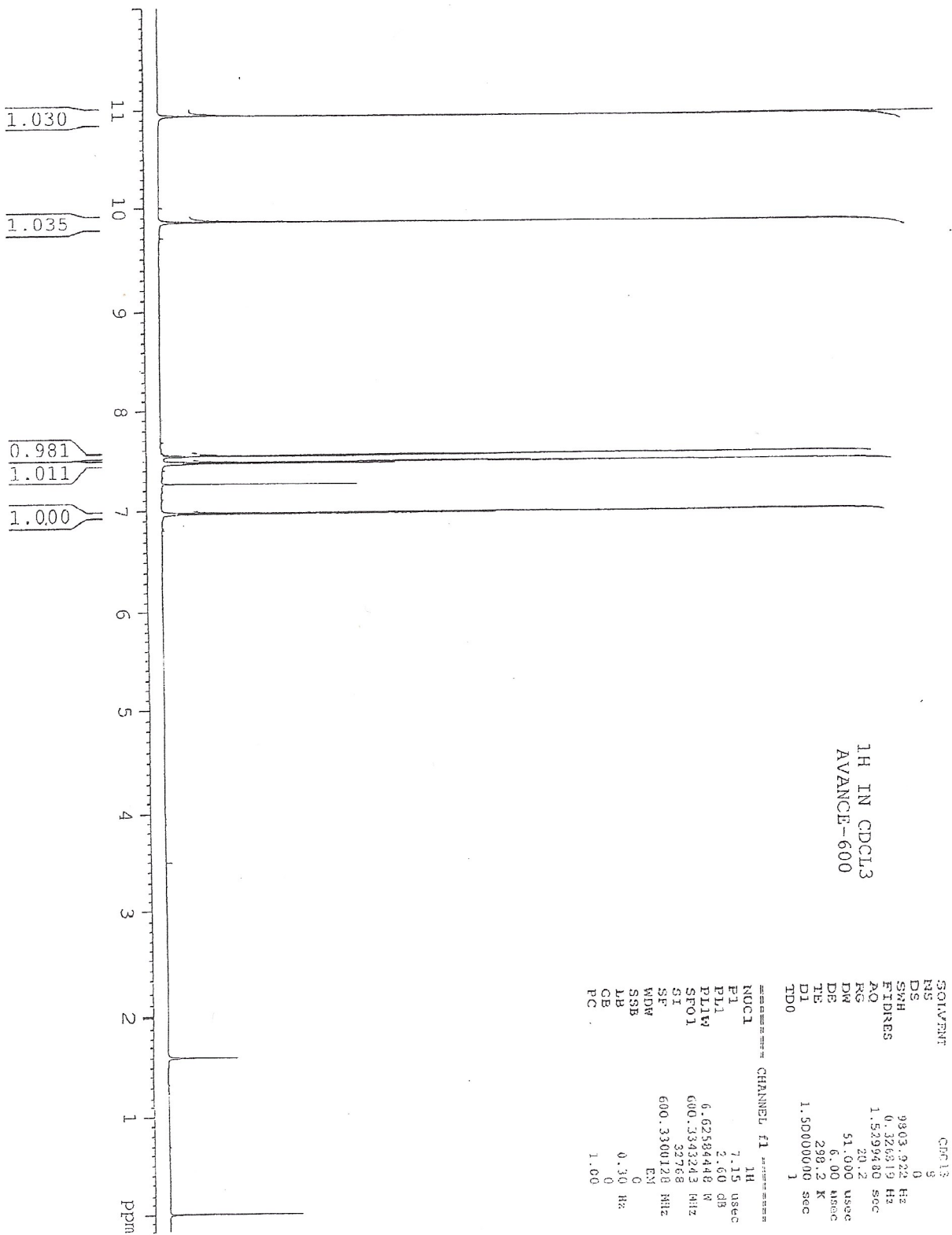
Peak#	Name	Ret. Time	Area	Area %	Relative Retention Time
1	RT:3.097	3.097	10683	0.03	0.47
2	RT:3.776	3.776	8923	0.03	0.57
3	RT:4.909	4.909	30994	0.09	0.75
4	5-Chlorosalicylaldehyde	6.579	33972072	99.45	1.00
5	RT:7.051	7.051	137376	0.40	1.07
Total			34160048	100.00	



INDOFINE Chemical Company, Inc.
 121 STRYKER LANE
 BLDG. 30, SUITE 1
 HILLSBOROUGH, NJ 08844

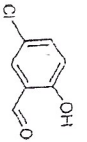


Catalog no.: 19-587
 Product name: 5-Chlorosalicylaldehyde
 Lot No.: 0902016

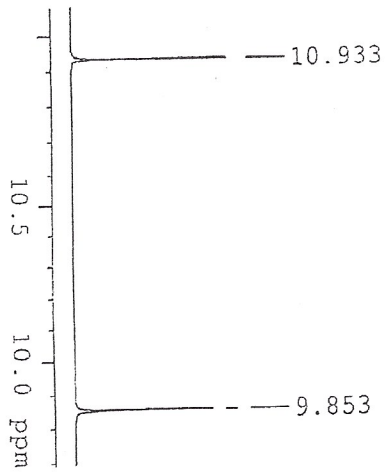




INDOFINE Chemical Company, Inc.
 121 STRYKER LANE
 BLDG. 30, SUITE 1
 HILLSBOROUGH, NJ 08844



Catalog no.: 19-587
 Product name: 5-Chlorosalicylaldehyde
 Lot No.: 0902016



1H IN CDCl3
 AVANCE-600

```

===== CHANNEL F1 =====
SOLVENT CDCl3
NS 8
US 0
SMH 5803.922 Hz
FIDRES 0.326819 Hz
AQ 1.5296400 sec
RG 20.2
RG 51.000 usec
DW 6.00 usec
DE 298.2 K
TE 1.5000000 sec
D1 1
TD0 1

===== CHANNEL F1 =====
NUC1 1H
F1 7.15 usec
PL 2.60 dB
PLW 6.62584448 W
SFO1 600.3343243 MHz
SI 32768
SF 600.3300128 MHz
NDW 0
SSB 0
LB 0.30 Hz
GB 0
PC 1.00
  
```

